



<b>Engine Power</b>	179 kW (240 hp / 243 ps) @ 2,000 rpm
<b>Blade Capacity</b>	17.0 m <sup>3</sup>
<b>Operating Weight</b>	26,800 kg
<b>Lift above Ground</b>	1,300 mm
<b>Depth below Ground</b>	540 mm

## **B230CR BULLDOZER**

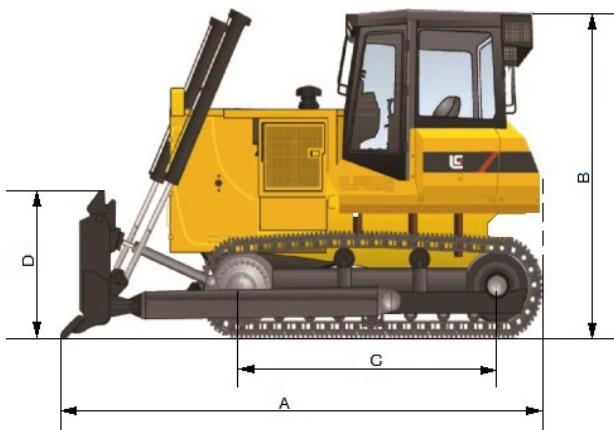
**TOUGH WORLD. TOUGH EQUIPMENT.**

# B230CR SPECIFICATIONS >>>

ENGINE	
Model	ChongQing Cummins QSNT-C240
Type	Turbocharged
Emission Regulation	Tier 3/ China III
Displacement	14 L
Max. Engine Speed	2,200 rpm
Engine Power	179 kW (240 hp /243 ps) @ 2,000 rpm
Peak Torque	1,050 N·m @ 1,400 rpm
Lowest Fuel Consumption	≤ 217 g/kW·h
Start Motor	24 V
Drawbar Pull	225 kN

UNDERCARRIAGE	
Type	Splayed oscillating, equalizer suspension
Track Rollers (Each Side)	8
Top Idlers (Each Side)	2
Track Type	Triangle track shoe, swamp
Shoe Width	910 mm
Track Shoes (Each Side)	45
Link Pitch	216 mm
Gradeability	30°
Ground Pressure	39 kpa

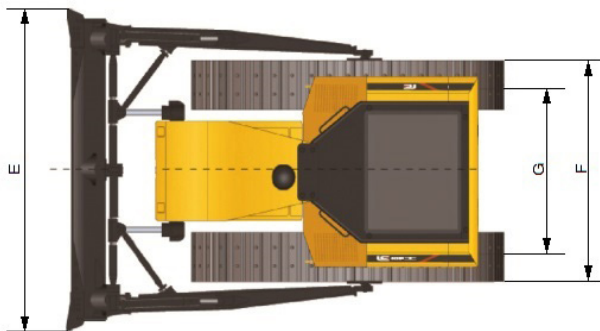
DIMENSIONS	
A Overall Length	6,060 mm
B Height to Top of Cab	3,420 mm
C Track Length on Ground	3,480 mm
D Blade Height	1,990 mm
E Blade Width	4,365 mm
F Width over Track	3,160 mm
G Track Gauge	2,250 mm



TRAVEL SPEED		
Foward	Gear 1	0-3.8 km/h
	Gear 2	0-6.8 km/h
	Gear 3	0-10.7 km/h
Reverse	Gear 1	0-4.9 km/h
	Gear 2	0-8.6 km/h
	Gear 3	0-13.3 km/h

HYDRAULIC SYSTEM	
Flow	198 L/min
Pressure	19.5 MPa
Pump	Gear pump
Cylinders	Dual-acting piston type

DRIVE SYSTEM	
Torque Converter	Single-stage, single-phase three elements
Transmission	Planetary power shift
Clutch	Multiple-disc oil powder metallurgy disc compressed by spring, released by hydraulic
Brakes	Oil two direction floating band brake operated by mechanical foot pedal.



Guangxi Liugong Machinery Co., Ltd.

No. 1 Liutai Road, Liuzhou, Guangxi 545007, PR China  
T: +86 772 3886124 E: overseas@liugong.com  
www.liugong.com

Specifications and designs are subject to change without notice. Machines shown may include optional equipment. Liugong standard and optional equipment may vary from region to region. Please consult your Liugong dealer for information specific to your area. Engine power kW is converted to horsepower (1 kW=1.3596 ps and 1 kW=1.3410 hp) in this file.

05/2024 Designed by LiuGong  
Replace the previous versions of 02/2021