



**Engine** Cummins QSB7  
**Rated Power** 169 kW (227 hp / 230 ps) @ 2,050 rpm  
**Operating Weight** 41,500 kg

# 943E<sub>MH</sub> EXCAVATOR

# 943E<sub>MH</sub> SPECIFICATIONS >>>

## ENGINE

|                     |                                      |
|---------------------|--------------------------------------|
| Emission Regulation | Stage IIIA                           |
| Manufacturer        | Cummins                              |
| Model               | QSB7                                 |
| Rated Power         | 169 kW (227 hp / 230 ps) @ 2,050 rpm |
| Net Power           | 156 kW (209 hp / 212 ps) @ 1,900 rpm |
| Peak Torque         | 895 N·m @ 1,250 rpm                  |
| Number of Cylinders | 6                                    |
| Displacement        | 6.7 L                                |

## UNDERCARRIAGE

|                                   |        |
|-----------------------------------|--------|
| Shoe Width                        | 600 mm |
| Number of Shoes per Side          | 50     |
| Number of Upper Rollers per Side  | 2      |
| Number of Bottom Rollers per Side | 9      |

## BOOM & ARM

|             |          |
|-------------|----------|
| Boom Length | 8,500 mm |
| Arm Length  | 6,200 mm |

## TRACK DRIVE

|                      |          |
|----------------------|----------|
| Maximum Travel Speed | 5.3 km/h |
| Drawbar Pull         | 300 kN   |

## SERVICE CAPACITIES

|                        |       |
|------------------------|-------|
| Fuel Tank              | 620 L |
| Engine Oil             | 23 L  |
| Cooling System         | 35 L  |
| Hydraulic Reservoir    | 240 L |
| Hydraulic System Total | 450 L |

## HYDRAULIC SYSTEM

|                       |             |
|-----------------------|-------------|
| Main Pumps Total Flow | 2×300 L/min |
| Relief Pressure, main | 34.3 MPa    |

## SWING SYSTEM

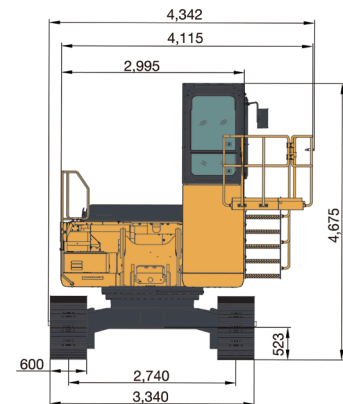
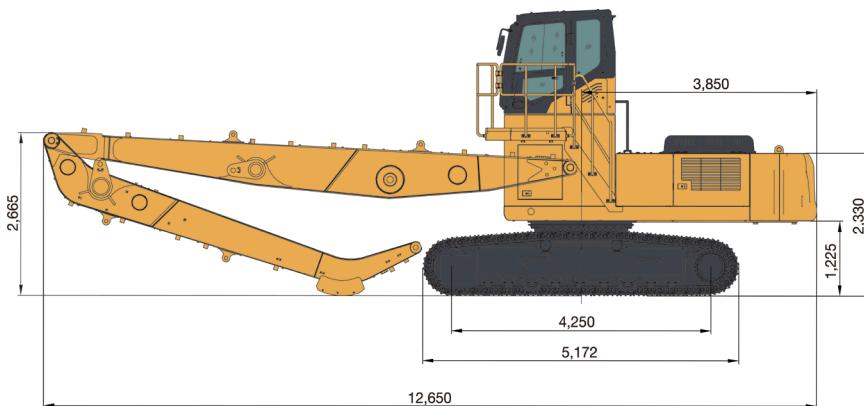
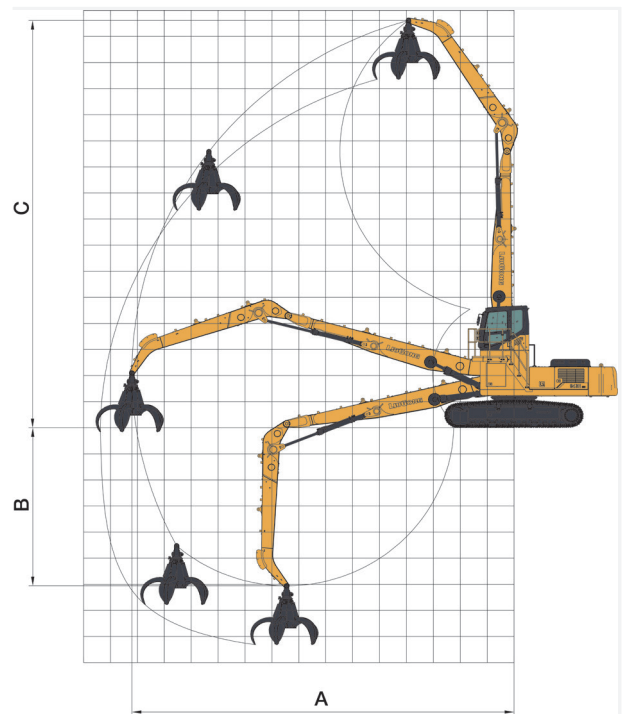
|             |         |
|-------------|---------|
| Swing Speed | 9.2 rpm |
|-------------|---------|

## WORK RANGE

|                        |           |
|------------------------|-----------|
| A. Max. Working Radius | 14,200 mm |
| B. Max. Working Depth  | 6,050 mm  |
| C. Max. Working Height | 15,600 mm |

## OPTIONAL EQUIPMENT

|                               |          |
|-------------------------------|----------|
| Elevated Cab (Lifting Height) | 2,537 mm |
|-------------------------------|----------|



## Guangxi Liugong Machinery Co., Ltd.

No. 1 Liutai Road, Liuzhou, Guangxi 545007, PR China  
T: +86 772 3886124 E: overseas@liugong.com  
www.liugong.com

Specifications and designs are subject to change without notice. Machines shown may include optional equipment. Liugong standard and optional equipment may vary from region to region. Please consult your Liugong dealer for information specific to your area. Engine power kW is converted to metric hp in this file (1 kW=1.3596 hp).

01/2023 Designed by LiuGong  
Replace the previous versions of 06/2022